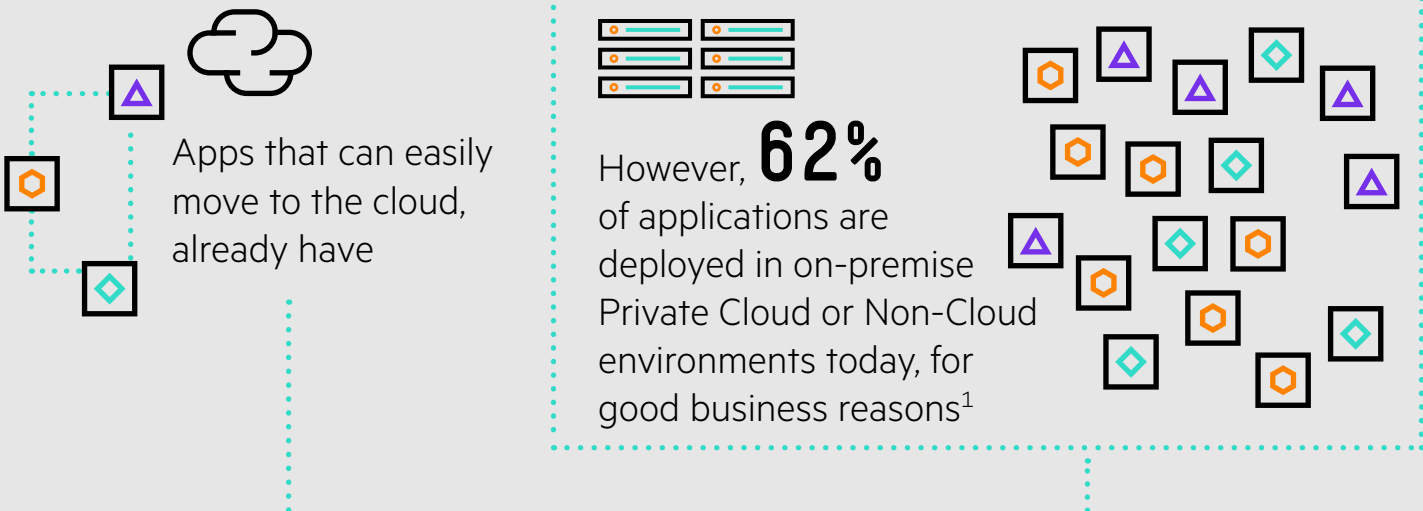


ACCELERATE INNOVATION WITH THE HPE GREENLAKE EDGE-TO-CLOUD PLATFORM

Digital transformation is happening all around us. The cloud's instant access to resources and the shift to "everything-as-a-service" is a proven accelerator for innovation.

But, cloud transformation is far from complete.

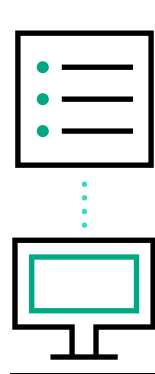


The HPE GreenLake platform delivers the modern cloud experience for all your apps and data, everywhere



Getting started is easy, simply:

CHOOSE



Services in just a few clicks

ORDER



Arrival in as little as 14 days

INSTALL

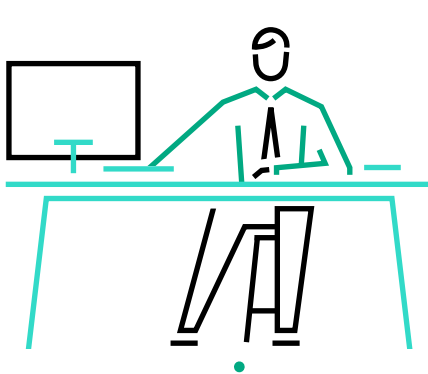


Experts install and configure on-site

GO!

Launch within minutes of connecting to the network

Simplified IT for users

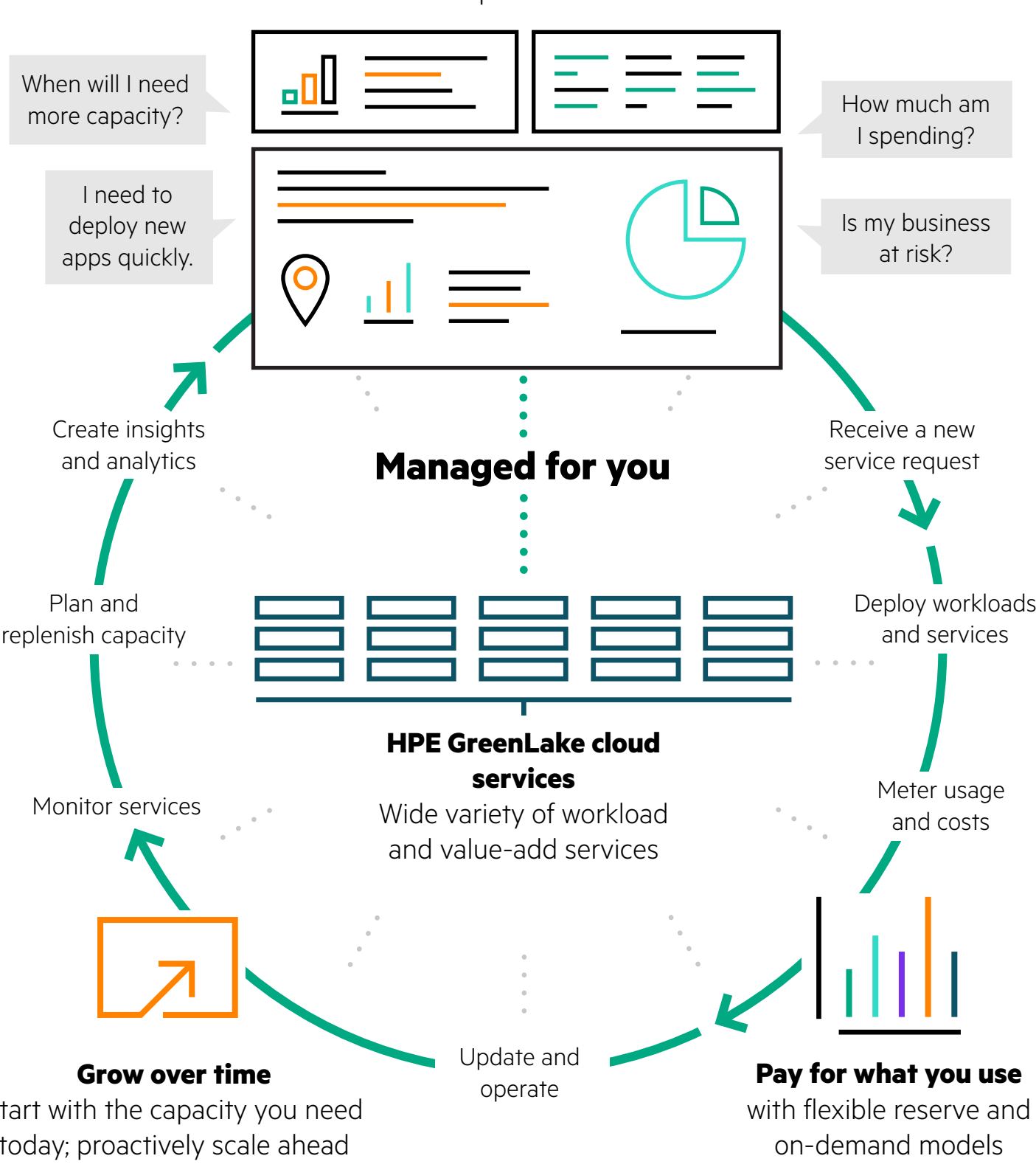


Easily add and manage services through a single point-and-click portal

Gain deeper insights for action across your hybrid environment

HPE GreenLake Central

Unified operations and insights across on-prem and clouds



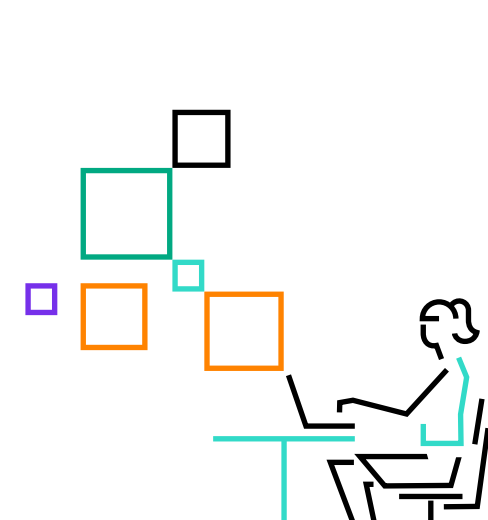
Using the HPE GreenLake platform, you can unlock capital, boost operational and financial flexibility, and free up your talent to accelerate what's next for you.

75% shorter time to deploy digital projects³

85% less unplanned downtime⁴

30-40% CAPEX savings due to eliminated need for overprovisioning³

40% increased IT team productivity by reducing the support load on IT³



Deliver the cloud experience across datacenters, multi-clouds and edges

Provide data insights to better manage capacity, performance, compliance and cost

The bottom line: Get the **simplicity, agility and economics** of public cloud, and the **security, control and performance** benefits of on-premises IT on **your** terms—with the HPE GreenLake edge-to-cloud platform.

Take control and simplify your IT experience today.

Learn more by visiting: hpe.com/greenlake

¹ IDC Cloud Pulse 1Q21
² Reserve may apply
³ A commissioned study conducted by Forrester Consulting, The Total Economic Impact™ of HPE GreenLake, May 2020
⁴ IDC White Paper, sponsored by HPE, The Business Value of HPE GreenLake Management Services, January 2020